

Bloomberg

Bloomberg Terminal Access

Bloomberg Terminal Remote Connection Guide

HEC Montréal

FINANCIÈRE BANQUE NATIONALE

Remote access to Bloomberg terminal

As part of your finance courses, you will be required to use a virtual machine (VM) on which Bloomberg Remote will be available. To do this you will need to use a client (VMware Horizon client). The procedure for installing the client is described in the following pages.

Once the **VMware Horizon client** is installed on your computer, in order to connect to Bloomberg, you must follow these procedures:

- 1- First, student **MUST** contact an operator via the [trading room's Microsoft Teams account](#) (salledesmarches@hec.ca) in order **to be assigned a remote login server** (e.g. 11752) **and a Bloomberg login and password**.
- 2- Then, students **MUST** contact the operator in charge via Microsoft Teams so that the operator in charge **assigns** him or her **a remote connection server** (e.g. 11752), **a Bloomberg login and password**.
- 3- Once the server has been assigned, it will be necessary to connect to the workstation via the **VMware Horizon client** using the same login credentials as in the trading room:

Username : [.\etudiant](#)

Mot de passe : [HEC](#)

Once logged in, just click on the Bloomberg icon. The identifiers to connect to Bloomberg will be given by the operator in charge.



Note: to access the VM from outside the HEC network, you must install the **Student VPN** available at the following link:

<https://confluence.hec.ca/pages/viewpage.action?pageId=46596735>.

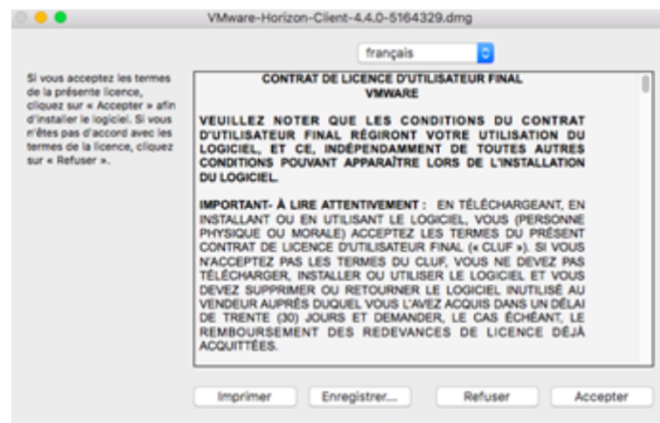
Remote access to Bloomberg terminal

How to Install VMware Horizon Client on MAC

Client download and installation

Download the client : http://blogue.hec.ca/telechargements/client_horizon_mac.zip

Unzip the file on the desktop then open the .DMG file and click Accept

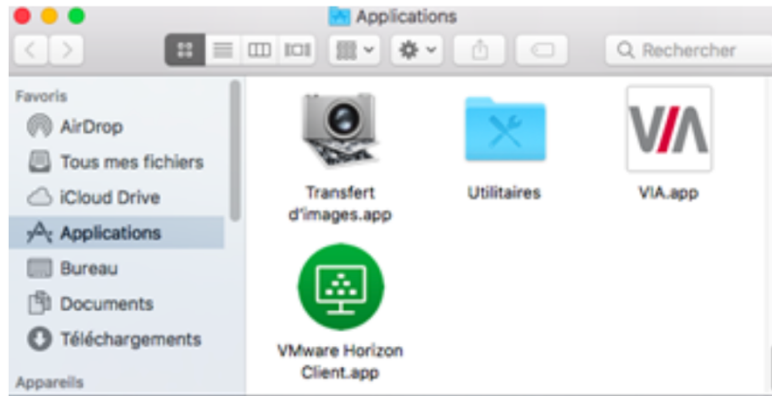


Take the VMware Horizon Client.app icon and drag it into Applications.

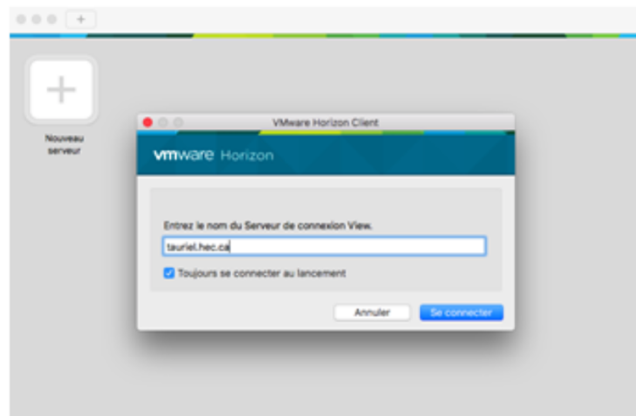


Remote access to Bloomberg terminal

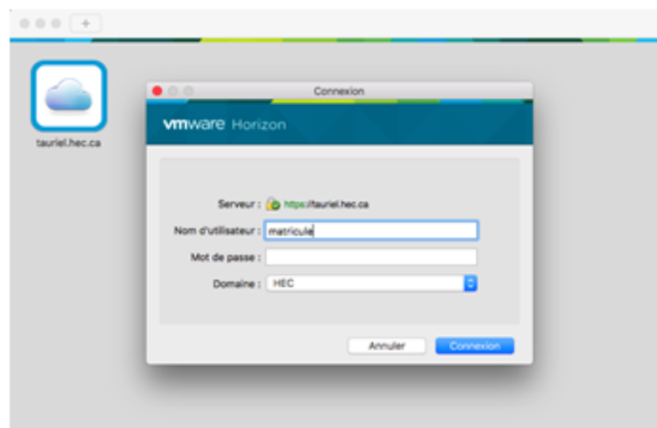
Go to Applications, Double-Click on VMware Horizon Client.app



Type arwen.hec.ca



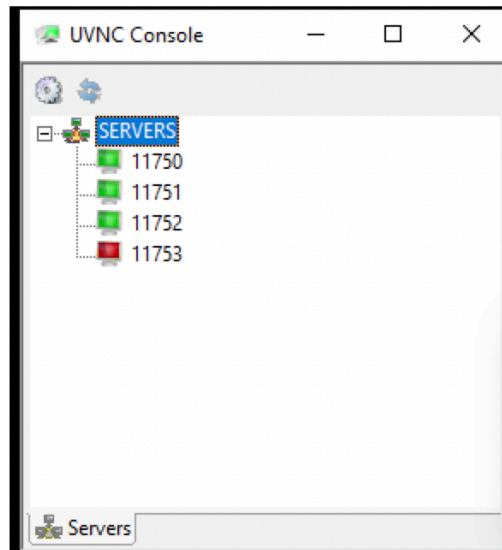
Enter your HEC number and password



Remote access to Bloomberg terminal

The VM should open and start in full-screen mode. To return to window mode press Ctrl+Cmd+F.

The student will then see the next window where he or she can see the available terminals.



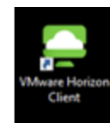
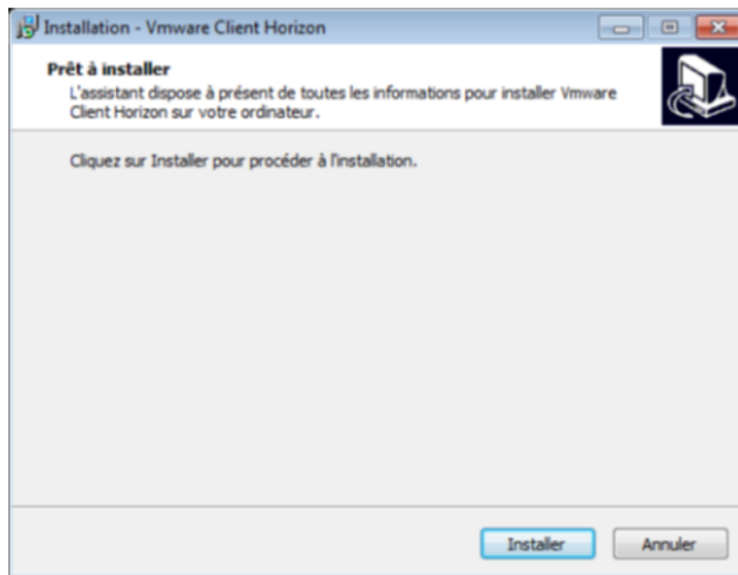
Remote access to Bloomberg terminal

How to Install VMware Horizon Client on WINDOWS

Client download and installation

Download the client : https://blogue.hec.ca/telechargements/Client_Horizon.zip
Unzip and double-click on "Vmware Client Horizon.exe"

To install the VMWare Horizon client, click install.



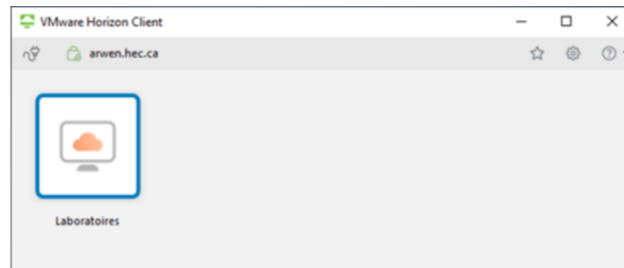
Double-click VMware Horizon Client on the desktop.

When opening the Horizon client, type your HEC number and password.

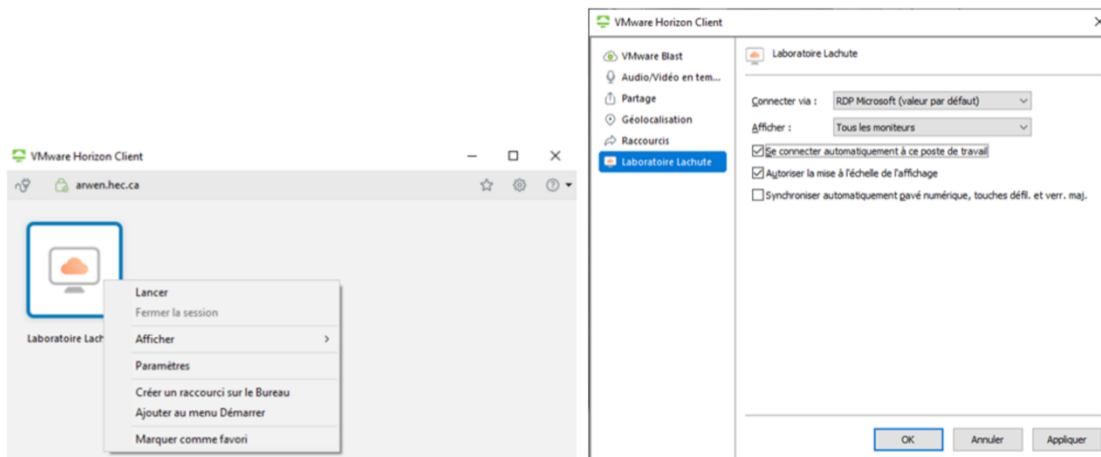


Remote access to Bloomberg terminal

Click on the lab icon to access VM.



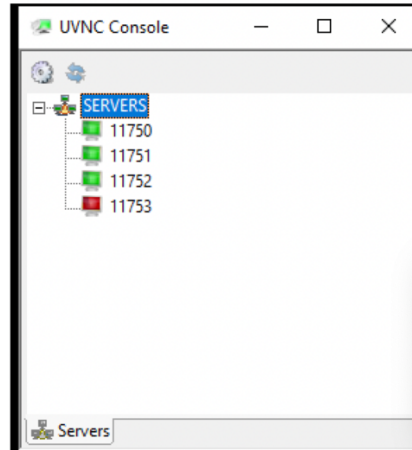
With the right button, click on settings and check the box “Automatically connect to this workstation.”



By default the VMware window is full screen, you can also have it windowed.
At the top, there is a button to connect a USB key. There are 2 options, connect automatically at the startup and connect automatically at insertion.

The student will then see the next window where he or she can see the available terminals.

Remote access to Bloomberg terminal



For more information, go to:

- MAC :
<https://confluence.hec.ca/display/DTIKB/Installation+client+VMWare+Horizon+pour+MAC>
- WINDOWS :
<https://confluence.hec.ca/display/DTIKB/Installation+client+VMWare+Horizon+pour+Windows>

Or contact an operator during business hours via Teams : salledesmarches@hec.ca